

Digital duplicator

RISO SF5430 **ET** U

130 ppm High-speed printing

300x600 dpi High-resolution

Ledger paper size

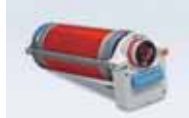
Speed Forward Edition II



An upgraded print system for use in various settings

RISO SF5430 EU U

Optional Accessories



RISO FII Type Drum
Enables color printing.
(Case included)



RISO Auto Document Feeder AF-VII
Scans multiple documents automatically.



RISO Job Separator IV; NIII
Enables easy separation of printed sheets by inserting tape strips.



Card Feed Kit
Compatible with paper weight 27-lb bond to 221-lb index (100 gsm to 400 gsm).
*Please contact a RISO sales representative for the kinds of paper that may be used.



RISO Stand D Type III
Deluxe and with doors for convenient storage with a neat appearance.



RISO Stand N Type III
Sturdy open-front stand also offers convenient storage of consumables.

- IC Card Reader Activation Kit RG
- RISO Network Kit S10
- RISO Printer driver for Macintosh
- Envelope Feed Kit
Compatible with paper weight 13-lb bond to 32-lb bond (50 gsm to 120 gsm).

Specifications

Master Making/Printing Methods		High-speed digital master-making/Fully automatic printing
Original Type		Book or sheet
Master Making Time*1	Quick Master Making mode	- Approx. 15 seconds (Letter, long-edge feed) - Approx. 17 seconds (Letter, short-edge feed)
	Normal Master Making mode	- Approx. 17 seconds (Letter, long-edge feed) - Approx. 19 seconds (Letter, short-edge feed)
Resolution	Scanning	600 dpi × 600 dpi
	Printing	300 dpi × 600 dpi, Quick Master Making mode: 300 dpi × 400 dpi
Maximum Scanning Area		11 11/16 inches × 17 inches (297 mm × 432 mm)
Print Paper Weight		12-lb bond to 42-lb bond (46 gsm to 157 gsm)
Print Paper Size		3 15/16 inches × 5 13/16 inches to 12 7/32 inches × 17 inches (100 mm × 148 mm to 310 mm × 432 mm)
Maximum Printing Area		11 15/32 inches × 16 23/32 inches (291 mm × 425 mm)
Paper Feed Tray Stacking Capacity		1000 sheets*2, stacking height of 4 11/32 inches (110 mm) or lower
Paper Receiving Tray Stacking Capacity		1000 sheets*2, stacking height of 4 11/32 inches (110 mm) or lower
Print Speed		5 levels: 60, 80, 100, 120 and 130 ppm
Print Position Adjustment		Horizontal: ±19/32 inches, Vertical: ±13/32 inches (Horizontal: ±15 mm, Vertical: ±10 mm)
Image Processing Mode		Line, Photo, Duo, Pencil
Print Reproduction Ratio		Type: inch Zoom (50% to 200%), 100% reproduction ratio, 3 levels of enlargement (154%, 129%, 121%), 4 levels of reduction (94%, 78%, 65%, 61%) Type: mm Zoom (50% to 200%), 100% reproduction ratio, 3 levels of enlargement (141%, 122%, 116%), 4 levels of reduction (94%, 87%, 82%, 71%)
User Interface		LCD panel
Functions		Original Scanning Mode, Scanning Level, Enlargement/Reduction, Dot Process, 2-Up, Book, Ink Saving, Quick Master Making, ADF Semi-Auto*3, Speed, Density, Print Position, Program A/B, D-Feed Check, Slip Sheet Sorting, Job Separation*4, Idling, Confidential, Meter Display, Count Report Output, Proof, Direct Printing, USB Flash-via-Printing, Paper Memory Print, Auto Sleep Setting, Auto Power-OFF Setting, ECO Mode, RISO iQuality System
PC Interface		USB2.0, Ethernet:100BASE-TX, 10BASE-T*5
Ink Supply		Full automatic (1000 ml/cartridge)
Master Supply/Disposal		Full automatic (Ledger: approx. 215 sheets per roll)/Disposal capacity: approx. 100 sheets
Power Source*6		AC 100-120 V 3.4 A, AC 220-240 V 1.6 A, 50-60 Hz
Power Consumption	Standard	Max.: 300 W, Ready: 20 W or lower, Sleep: 5 W or lower, Power-OFF: 0.5 W or lower
	Optional Accessories Connected*7	Max.: 315 W, Ready: 30 W or lower, Sleep: 10 W or lower, Power-OFF: 0.5 W or lower
Dimensions (W×D×H)	In use	55 23/32 inches × 26 3/8 inches*8 × 41 15/16 inches*9 (1415 mm × 670 mm*8 × 1065 mm*9)
	In storage	30 23/32 inches × 26 3/8 inches*8 × 41 15/16 inches*9 (780 mm × 670 mm*8 × 1065 mm*9)
Required Space (W×D×H)		55 23/32 inches × 48 13/16 inches × 59 21/32 inches*9 (1415 mm × 1240 mm × 1515 mm*9)
Weight		221 lb (100 kg)*10

*1 Measurement value when set to 100% reproduction ratio. *2 When using the following weight of paper; 17-lb bond to 21-lb bond (64 gsm to 80 gsm)

*3 Usable when the optional auto document feeder is installed. *4 Usable when the optional Job Separator is installed. *5 RISO Network Kit S10 (optional) is required for connecting to the network.

*6 To switch between 100-120 V and 220-240 V, contact your dealer or authorized representative. *7 When all the following optional accessories are installed; Auto Document Feeder, Job Separator, IC Card Reader.

*8 The depth does not include the stabilizers for the dedicated stand. *9 The height includes the dedicated stand. *10 The weight does not include the ink, master roll, and stand.

Notes: The specifications are subject to change without prior notice.

and RISO. RISO i Quality System and RISO i Quality mark are trademarks or registered trademarks of RISO KAGAKU CORPORATION in the United States and other countries. Other corporate names and/or trademarks are either registered trademarks or trademarks of each company, respectively.

Copyright ©2019 RISO KAGAKU CORPORATION. All rights reserved.



RISO LATIN AMERICA, INC.
13680 NW 5th Street, Suite 100 - Sunrise, FL 33325
<http://www.risolatin.com/>

For more details please contact: