

integrated system controller specifications

CPU	SH-3 (133 MHz)
PDL	RISORINC 3N (advance/simple)
OS	Windows XP, Vista (32-bit/64-bit), 7 (32-bit/64-bit) Macintosh OSX 10.4, 10.5, 10.6 via optional driver
input port	USB 2.0, Ethernet (100BASE-TX/10 -BASE-T)
memory	128 MB
network protocol	TCP/IP, EtherTalk, NetBEUI
network printing	sdfNetwork Card is built in

optional IS300 PostScript RIP specifications

CPU	Intel® Celeron® D 2.93 GHz
PDL	Adobe® PostScript®3™, PDF (1.7), TIFF (6.0)
OS	Windows® XP (32-bit) SP 2 / SP3 / Windows® Vista (32- and 64-bit) / Windows 7 32- and 64-bit Mac OS® X 10.4/ Mac OS® 10.5 / Mac OS®10.6
memory	256 MB
hard disk	80 GB
number of fonts	139 fonts

RZ1090 specifications

processing	High-speed digital master making, fully automatic stencil printing system
resolution	Scanning: 600 x 600 dpi Imaging: 600 x 600 dpi
master-making time	Approx. 16 seconds (for A4/landscape/ 100% reproduction ratio)
printing speed	60 - 180 sheets per minute (control panel: five steps variable, touch panel: 180 ppm)
original size and weight	From stage glass: 22 lb or less. 1 15/16" x 3 9/16" to 12 3/16" x 17" (50 x 90 mm to 310 x 432 mm) In the optional Automatic Document Feeder AF-VI: 13 lb bond to 34 lb bond (50 to 128 GSM); 3 15/16" x 5 13/16" to 12 3/16" x 17" (100 x 148 mm to 310 x 432 mm) When using Auto Document Feeder DX-1 (option) : Simplex: 11 lb bond to 34 lb bond (40 to 128 GSM); Duplex: 14 lb bond to 28 lb bond (52 to 105 GSM); 4 1/8" x 5 1/16" to 11 11/16" x 17" (105 x 128 mm to 297 x 432 mm)
paper size and weight	3 15/16" x 5 13/16" to 12 10/16" x 17" (100 x 148 mm to 320 x 432 mm). Up to 21 14/16" (555 mm) of vertical paper dimension may be used. 12 lb bond to 110 lb index (46 to 210 GSM)
image processing modes	Line, Photo, Duo, Pencil
image area (max.)	10 25/32" x 16 23/32" (291 x 425 mm)
paper capacity	1000 sheets in feed tray and receive tray (17 lb bond [64 GSM])
Standard reproduction ratio (enlargement) : 163%, 141%, 122%, 116%	
Standard reproduction ratio (reduction) : 87%, 82%, 71%, 61%	
preset reduction/enlarge	50%, 61%, 65%, 78%, 121%, 129%, 154%, 200%

zoom/free reduction/enlargement	Zoom: 50%-200% in 1% increments Free (individual adjustment of length or width): 50%-200%. Margin+: 90-99%
print position adjustment	Vertical: ±19/32" (±15 mm); Hor.: ±3/8" (±10 mm)
registration	Print start position: within 1/16" (2 mm)
standard features	User Management, RISO Copy Count Viewer, ID Counter Report, ID Print, Layout, USB Plug-and-Print, USB Flash Print Utility, Book Shadow Erase, RISO Editor, Auto Process, Dot Screening (4 Dot Photo Modes), Scanning Contrast (Auto + 5 selectable steps), Top and Side Margin Adjust, Page Split, Bound Document Processing, Photo Contrast Adjust, Tone Curve Adjust, Ink Saving Mode, Multi-up Printing (2/4/8/16/ticket), Renew Page, Preview, Print Density Adjustment (5 steps), Double Feed Check, Interval Print, Program Printing, Job Memory, Reserve, Automatic and Manual Idling, Confidential Mode, Combination Print, Custom Paper Entry, Admin. Setting, Direct Access and Selection Entry, Document Storage*, Overlay*, Stamp*, Output Reversal*, RISO i Quality System™, Integrated GDI System Controller, LCD Touch Panel, Print Speed/Density Control, Energy Saving Modes (Auto Sleep, Auto Power Off, Power Off Schedule), Paper Size Detection, Preventive Maintenance Indicator, Precision Stacking Tray, Auto Paper Jumping Wing Adjustment, Network Interface Card, High Density Ink, High Density Masters, and Stand
options	Automatic Document Feeder (Simplex), Automatic Document Feeder (Duplex), Color Print Drum (Cylinder), Auto-control Stacking Tray II, Wide Stacking Tray, Key Card Counter, Job Separator, Document Storage Card DM-128CF, RISO Controller IS300 Adobe® PostScript® 3™ RIP, Card Feed Kit, Job Separator, High Density Quick Dry Ink, and Letter-Size Cylinder
electrical	100V-240V AC, 50/60 Hz <5.0 A>
power consumption without option	max: 400 W standby: 43 W sleep: 2 W
weight of duplicator	Approximately 256 lbs. (116 kg)**
weight of stand	Approximately 81.4 lbs (37 kg)
dimensions (w x d x h)	In use, without stand: 55.72" x 27.75" x 26.19" (1415 x 705 x 665 mm)

*

Optional Document Storage Card DM-128CF is required for Document Storage, Overlay, and Stamp functions and output reversal

Item #MC8514

**

Weight does not include Ink and Master

RZ1090



Rooted in the offset printing process, the world’s fastest digital duplicator delivers digital business benefits

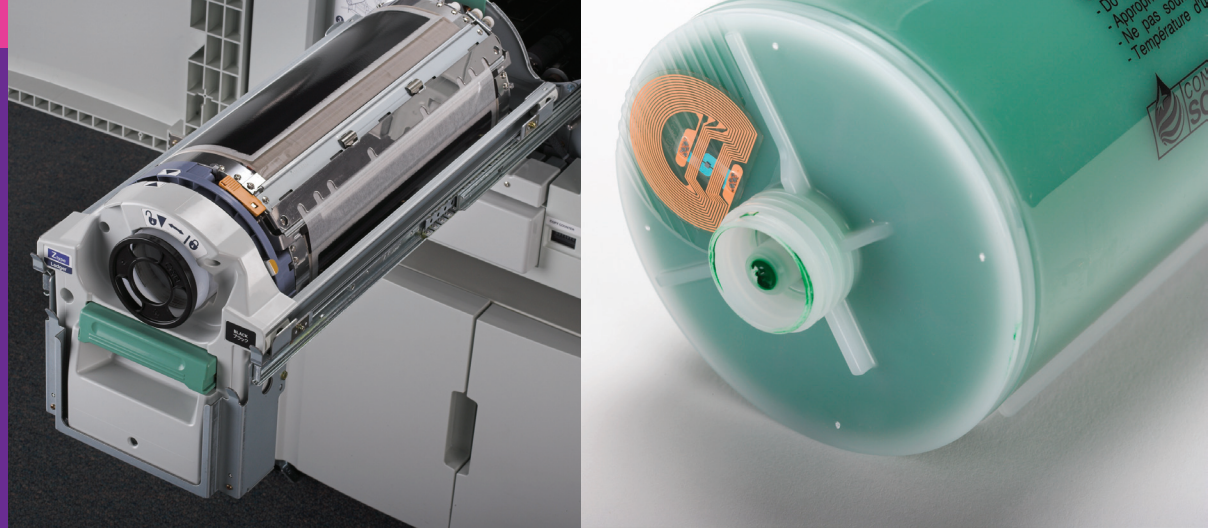


RISO, Inc.
300 Rosewood Drive, Danvers, MA 01923
Tel: 800-876-RISO (ref. 501) http://us.riso.com

©Copyright February 2011 RISO, Inc. All rights reserved. No part of this document may be reproduced without permission of RISO, Inc. All products are trademarks of their respective companies. Specifications subject to change without notice. Details may vary by region. Printed in the USA.



Ink and Ingenuity



RZ1090

Rooted in the offset printing process, the world's fastest digital duplicator delivers digital business benefits

Increase the speed and effectiveness of your printing operations with the RISO RZ1090, the world's fastest digital duplicator. The RZ1090 prints at speeds up to 180 ppm with true 600 dpi image quality for exceptional printing productivity and remarkable performance.

The RZ1090 imaging technology is based on proven offset printing processes using liquid ink and digitally imaged master plates to produce runs up to 4,000 prints. The simple “green-button” operation is as familiar as using a common copier; simply press one button to create, load, and unload natural fiber master plates and automatically begin printing. Automated production processes streamline workflow, maximizing machine availability to produce more jobs faster than ever before. Commercial printers, quick printers, copy shops, corporate in-plants, school districts, university print shops, large churches, and more will all benefit from the expanded capabilities of the RZ1090.

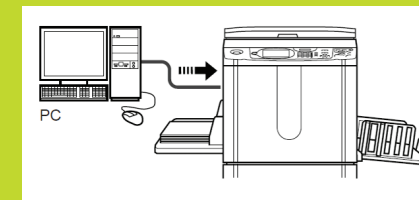
In addition to its high-speed printing capabilities and exceptional print quality, the RZ1090 is extremely versatile, handling a wide variety of paper sizes and weights—even card stock and envelopes. With over 70 ink colors to choose from, the RZ1090 will appeal to print shop owners and graphic designers alike, making this digital duplicator the perfect choice for demanding deadlines and low-cost short run needs.

Build on offset capabilities and move into digital printing with the RZ1090

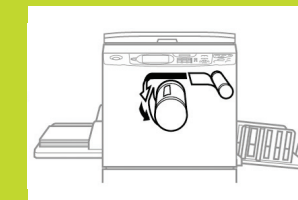


The RZ1090 provides an easy first step from analog offset to digital printing. The simple copier-like user interface and operation make the RZ1090 intuitive and fast to learn so you'll be producing high-quality output within minutes.

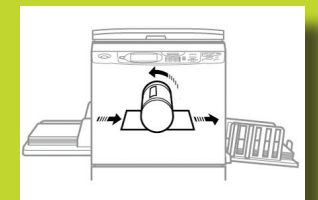
- Like offset, the RZ1090 uses liquid ink while electrophotographic copiers use dry toner.
- The RZ1090 uses master plates in the printing process. RISO masters are manufactured from an organic material—a major environmental benefit.
- Master plates are automatically exposed like CTP, plus automatically loaded and unloaded like on advanced DI offset presses.



File is sent directly from computer, or hard-copy original is digitized



Old master is removed, and a new master is automatically exposed and loaded



Straight paper path accommodates a wide variety of paper stocks



Produce more jobs faster

At speeds up to 180 pages-per-minute, the RZ1090 is the industry champion for speed and production output. The short paper path supports a wide range of paper stocks to deliver legendary RISO reliability.



Automate production

Plug-and-Print capability automatically and immediately prints one or multiple saved jobs from a USB flash drive without the need for additional user intervention. Job ticket settings are pre-programmed off-line and print production is launched automatically, eliminating potential operator errors and maximizing productivity.



Enhanced image quality

The RZ1090's true 600 dpi output ensures that the finest details in type, photos, and line art are accurately reproduced. Improved cylinder motion controls and advanced printer driver algorithms deliver smoother ink transfer and overall increased image quality.



Minimize short-run printing costs

A new ink saving mode reduces ink usage by up to 20% for cost-conscious customers. RISO thermal master plates are digitally imaged, automatically loaded/unloaded, and extremely low cost, delivering low cost, high-quality print runs up to 4,000 prints.



Increased job flexibility and system dependability

Automatically reverse the page printing sequence to enable faster off-line collation and finishing. Rotate pages 180° at the click of a button to reverse the lead-edge for jobs with high-density coverage, increasing paper feed reliability and reducing page-to-page set-off.



Go green

The RZ1090 is an ENERGY STAR qualified printer with extremely low power consumption. With over seventy soy-based ink colors, natural fiber masters, and a mercury-free LCD panel display, the RZ1090 provides an effective way to reduce your operation's carbon footprint.



Monitor supply levels and more

The RISO i Quality System™ offers a large number of quality and convenience benefits, including automatic assurance of optimal print quality from start to finish, prevention of operator errors, remaining levels of ink/masters, warnings of shortages in supplies, and indicators to aid in minimizing paper waste. Simply select the “info” button on the Basic Screen for a graphic of remaining consumables.

