

1
OR
2
COLOR
PRINTING



RISO MZ1070 Specifications

Master-making/Printing methods	High-speed digital master-making/Fully automatic one pass two color stencil printing
Original type	Book, Sheet
Original size	When using the Glass Platen: 50mm x 90mm – 310mm x 432mm When using the AF-VI:II (option): 100mm x 148mm – 310mm x 432mm When using the DX-I (option): 105mm x 128mm – 297mm x 432mm
Original paper weight	When using the Glass Platen: 10kg or less When using the AF-VI:II (option): 50g/m ² – 128g/m ² When using the DX-I (option): Single side feeding 40g/m ² – 128g/m ² , Double side feeding 52g/m ² – 105g/m ²
Scanning area (max.)	297mm x 432mm
Print paper size (max.)	When using the standard feed tray: 320mm x 432mm When using the wide stacking tray: 340mm x 555mm
Print paper size (min.)	Dual color print: 182mm x 257mm Single color print with drum 1: 100mm x 148mm Single color print with drum 2: 182mm x 257mm 150ppm single print with drum 2: 182mm x 364mm
Paper supply capacity	1000 sheets (64g/m ²)
Print paper weight	Standard: 64g/m ² – 210g/m ² , When using the Card Feed Kit (option): 100g/m ² – 400g/m ²
Image processing mode	Line, Photo (Standard/Portrait/Group), Duo (Line/Photo/Shadow off), Pencil (Darker/Lighter)
Resolution	Scanning resolution: 600dpi x 600dpi Printing image resolution: 600dpi x 600dpi
Master-making time (for A4/Portrait/100% reproduction ratio)	Dual color print: Approx. 57 seconds Single color print with drum 1: Approx. 24 seconds Single color print with drum 2: Approx. 34 seconds
Printing area (max.)	291mm x 413mm
Print reproduction ratio	Preset enlargements: 163%, 141%, 122%, 116%, Preset reductions: 87%, 82%, 71%, 61% Zoom: 50% – 200%, Free (individual adjustment of length or width): 50% – 200%, Margin: 90% – 99%
Print speed	60ppm – 150ppm, Five steps variable from the control panel (60, 80, 100, 110, 120ppm) 150ppm: Selectable from the touch panel
Print position adjustment	Vertical: ±15mm, Horizontal: ±10mm
Functions*1	Auto 90° rotation (B5/A4 size only), RISO Editor, Easy 2 color, Dot process (4 type), Scanning contrast adjustment (Auto/Manual 5 step), Photo contrast adjustment, Layout, Book shadow, Tone curve adjustment, Program print (50 group), 2UP, Multi-up print, Renew page, Ink saving, Interval, Combination print, Job memory (10 sets), Admin setting, Print density adjustment (Auto/Manual 5 steps), Confidential, Auto-idling, Direct access/Selections entry, Reservation, Storage memory*2, Overlay*2, Stamp*2, Preview, USB flash print, User management, ID print, ID counter report, My direct access, Protect, riso QualitySystem
Ink supply	Fully automatic (1000ml per cartridge)
Master supply/Disposal	Fully automatic (approx. 220 sheets per roll)
Master disposal box capacity	Approx. 80 sheets per box
User interface	LCD Touch Panel with Progress Arrow indicators
Input port	USB 2.0*3, Ethernet (100BASE-TX, 10BASE-T)*4
Network protocol	TCP/IP*4
Sound level (100ppm at operating position)	Less than 68dB
Power source	100V – 120V AC, 50Hz – 60Hz, <7.3A> 220V – 240V AC, 50Hz – 60Hz <3.0A>
Power consumption	100V – 120V Max.: 700W, During stand-by: 53W, During sleep mode: 2W 220V – 240V Max.: 650W, During stand-by: 53W, During sleep mode: 2W
Dimensions (WxDxH) without stand	When in use: 1625mm(W) x 735mm(D) x 740mm(H) When in storage: 1005mm(W) x 735mm(D) x 740mm(H)
Weight without stand	Approx. 171kg

Specifications are subject to change without notice. Details may vary depending on the region.

*1: Some functions may not be available depending on the printer setting.

*2: Optional Documents storage card DH-128CF is required.

*3: Use a commercially available USB cable less than 3m (that conforms to the USB 2.0 standard).

*4: Optional Network Card RISO NETWORK CARD is required for network and Macintosh connection.

For more details please contact:

One pass, two colors, powerful results

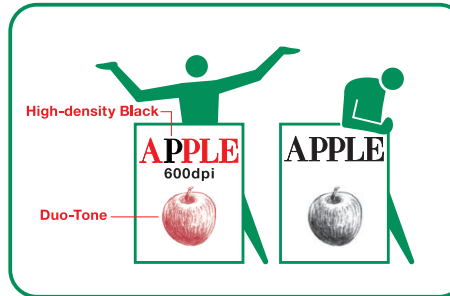
Two colors get more attention



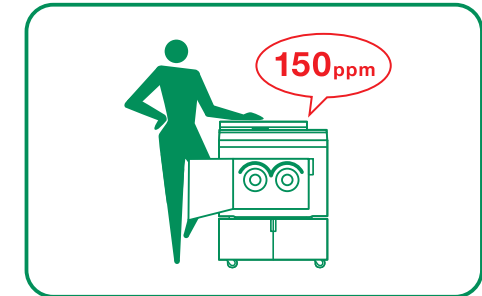
The impact of two-color printing

Adding a second color gives every one of your documents extra impact and immediacy. MZ series printers offer you all that extra power at just a single pass, letting you enjoy ease and convenience as you give your documents a professionally-finished look.

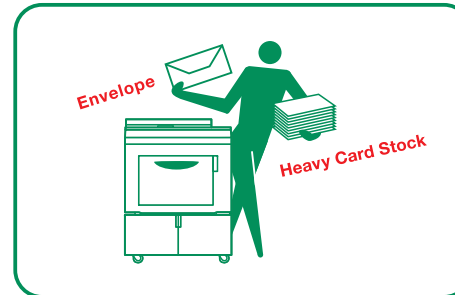
High quality: 600 x 600dpi resolution, high-density black ink and layering colors



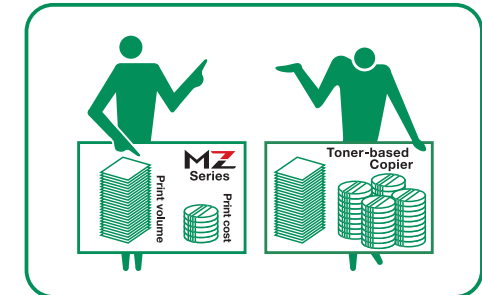
Productive: one-pass two-color printing at up to 150ppm



Versatile: wide range of paper types and weights



Economical: extremely low cost per page, ideal for long print runs

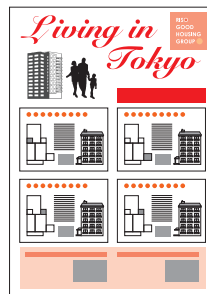


Wide-ranging applications

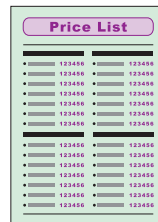
Everything looks better in two colors

It's hard to imagine a document that doesn't look better in two colors. Advertising fliers and leaflets, announcements, newsletters, tickets, business applications such as letterheads, reports and name cards, lesson materials, invitations, coupons... the list just goes on and on. If you can print it, it's sure to look better with a second color.

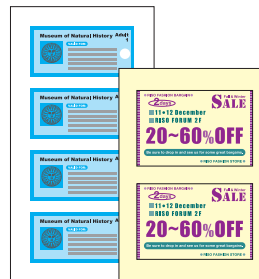
● Fliers



● Leaflets



● Tickets

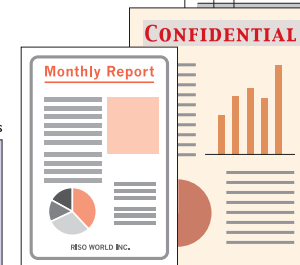


● Letter heads

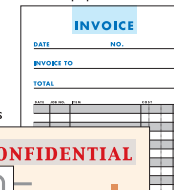


● Envelopes

● Business documents



● NCR paper



● Coupons



● Name cards



● Cards



Smart, easy and versatile – two-color printing the way you want it

Auto functions and full PC connectivity

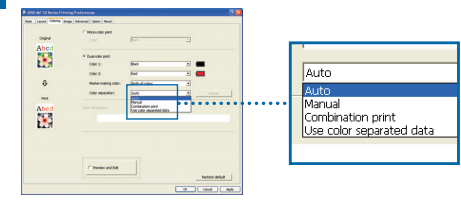
RISO MZ series printers make two-color printing quick and easy, thanks to an advanced printer driver that virtually does the job for you. Of course, you also enjoy manual control for those times when you want something the printer driver doesn't do for you automatically. And PC connectivity lets you use software you already know to create your originals, so you're always in familiar territory. There's no faster or easier way to carry out two-color printing than RISO MZ series printers.

Data from a PC

For users who create originals on a PC, the included printer driver software automatically handles color separation when the data is sent to the printer. Dual-tone color printing is also available.



Color separation

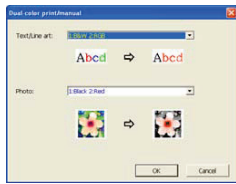


Auto

Color separation couldn't be simpler—just use the auto separation function in the printer driver and the job's done, with colors separated to match the print drums loaded in the printer. For example, if you have red and black drums, red and black tones in your image will be separated and sent to the respective drum, with other colors tones set to layering between red and black.

Manual

If you want more precise control, there's a manual mode that lets you specify individual colors for text/line art and photos on your original data and print with whichever drum you like.

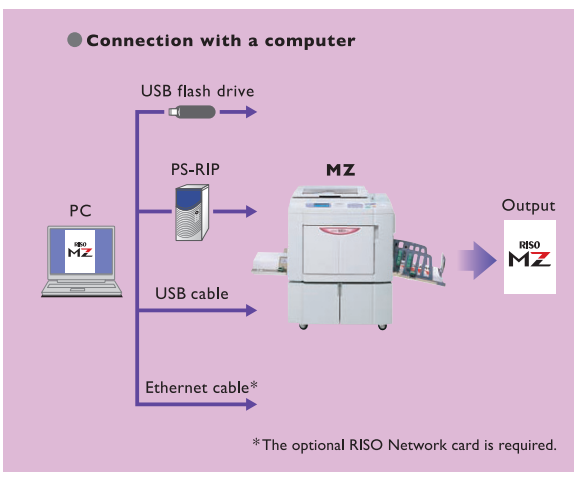
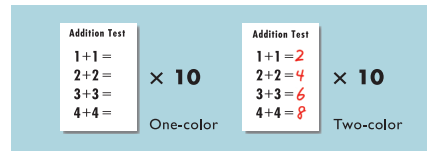


Use color separation

You can even use color separation data from drawing and other applications such as Adobe Illustrator.

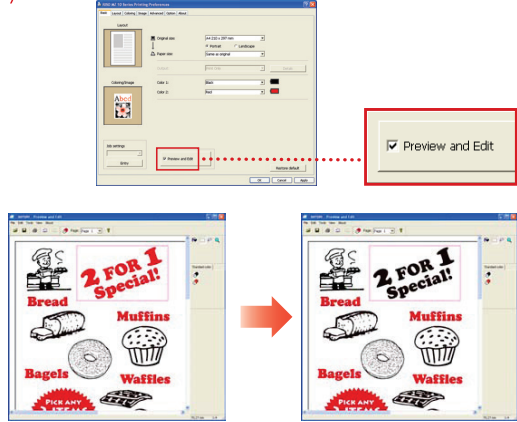
Combination print

Finally, combination print allows you to do split print runs of documents such as school tests with the first half of the run showing only the questions in, for example, black and the second half of the print run showing questions in black and the answers in red.



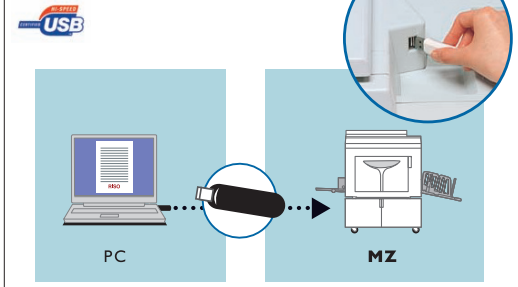
Preview and edit

You can preview the results of color separation on your PC monitor before you print to be sure the actual results will be exactly what you want. If you're not satisfied with the displayed separation, you can edit it by specifying precise areas and changing the color as you wish.



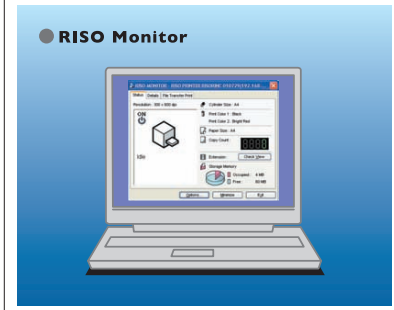
USB print

Even if your MZ series printer is not connected to your PC or network, you can still print directly from your data file. Just save the file through the printer driver to a USB flash drive, connect the flash drive to the printer via the built-in USB port, and you're ready to print.



Network connectivity

An optional network card offers ethernet connection via your LAN giving you bi-directional communication with the printer. And this means you can remotely monitor the printer's status such as the progress of a print job, color of loaded ink drums, and remaining paper, master and ink quantities. Note: For networking, the optional RISO Network card is required.



Advanced functions for easier two-color printing

Easier master-making with "easy 2-color"

The MZ series "easy 2-color" process not only makes it quick and easy to create two-color masters, it also offers you a choice of how to do it so you can select the method you find easiest or the one that's most suitable for your print job.

Just set and scan – color separation is automatic

Note: Automatic "easy 2-color" separation depends to a certain extent on the type of original used. To assure the best results, please contact your dealer for details on useable colors for originals and pens.



Red and black original

A red and black original gives the simplest master-making process. Just set your original and scan – the MZ series automatically does the color separation for you.

Handwritten separation

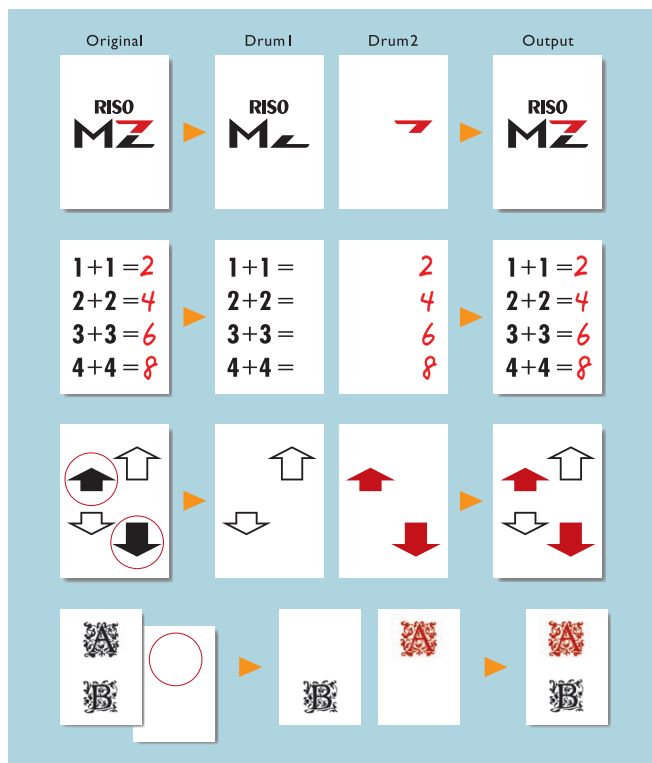
With a one-color original, you can write the data you want printed in the second color by hand. Then you simply scan and the colors are separated automatically.

Area separation

On a one-color original you just circle the areas for printing in the second color. Then scan your marked original and the color separation process happens automatically.

Separation sheet

With area separation, you have to mark your original. If you don't wish to write on your original, simply circle the area for printing in the second color on a separate sheet of paper and scan twice for color separation.



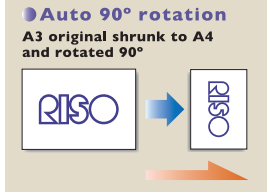
Total control for total operating ease

Logical panel layout

Easy, intuitive operation is assured thanks to a control panel divided into two areas. On the right side are dedicated buttons controlling all basic operations. On the left is a touchpanel giving easy access to a wide range of more advanced functions.

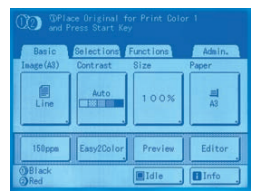
Auto 90° rotation

Similar to the function found on copiers, this rotates the print area by 90° to match paper orientation. So you're assured of successful printing no matter whether paper is loaded in portrait or landscape orientation. What's more, the function operates when reducing or enlarging (standard paper sizes only) – for example from A3 to A4 – to best fit the print area to your chosen paper size.



Easy-to-read screen for handy touchpanel operation

Enjoy clear, at-a-glance viewing of functions – and even a preview of how your printed document will look – with the large touchpanel screen. Thanks to logical grouping of functions, you simply step through the menus until you reach your desired operation. What's more, you can customize the panel layout and even place your most-frequently used functions on the top screen.



Dedicated controls for each print drum

The two print drums each have their own dedicated controls, allowing you to individually set print density and shift the entire print area for each color separately. There's also a dedicated speed control to set print speed.



Progress arrows

These arrows keep you in the picture about progress in master-making and printing, so you always know where you are in the process.



Lightweight, front loading print drums

Swapping a print drum for one of a different color is easier than ever thanks to the front loading design and lightweighting of the print drums.



Easy ink setting

Front panel access makes changing the ink bottle quick and easy, too. You simply insert the ink bottle and twist it into place.



Slide-out master unit

The master unit is side-mounted and slides out like a drawer for simple replacement of the master roll: just remove the old roll and drop a fresh one into place.



Advanced functions for more creativity

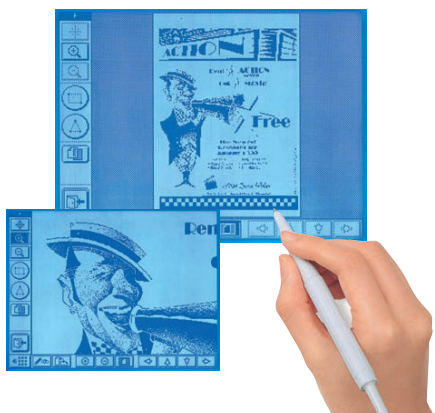
Pinpoint control for the results you want

The MZ series is packed with cutting-edge RISO technology to bring you ultimate control of the way your finished documents will look and deliver exactly the results you want. From the RISO Editor for precise editing and color separation to the selection of photo modes, the MZ series is designed and built to give you complete satisfaction.

Edit and preview modes give you total control

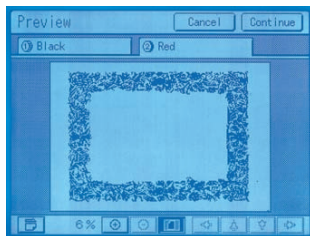
RISO Editor

The RISO Editor lets you directly specify on the touchpanel which areas should be in which color, or even move photos, illustrations or blocks of text to give you precise placement and enhance the appearance of your finished document.



Preview mode

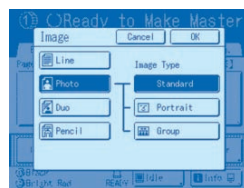
Preview mode shows you exactly how your finished document will look when printed, offering you a final check to ensure it exactly matches your vision.



Multiple image modes assure beautiful results

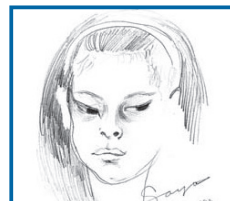
Line/photo/duo/pencil modes

Select from line, photo, duo or pencil modes. Line mode is best for text-only documents, photo mode is better for photos or illustrations, duo mode gives the best results for documents that are a mix of text and photos, while pencil mode is optimized for illustrations that are drawn in pencil.



Pencil mode

Often, illustrations drawn in pencil fail to scan cleanly. Pencil mode is optimized to clearly scan and print such illustrations to assure you of superb results.



A choice of three photo modes

Standard mode is the basic setting designed to give excellent results with the majority of photographs.



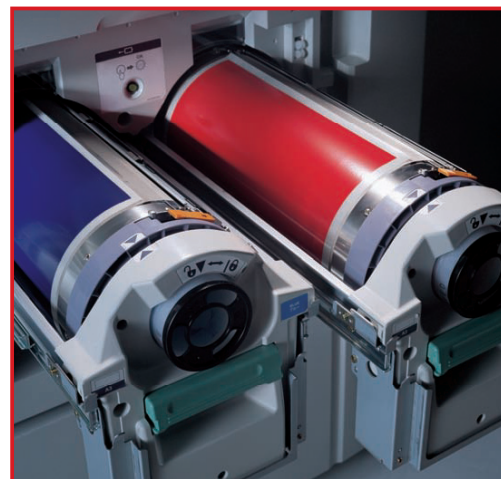
Portrait mode

Portrait mode is optimized to give clear gradations of skin tones, resulting in superbly lifelike output.



Group photo mode

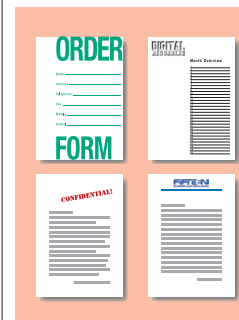
This mode uses a special algorithm to clearly show faces in group photos, so subjects can easily pick themselves out.



Document storage Overlay

Document storage lets you scan and store items such as letterheads and forms that you use frequently. You can recall the data at the touch of a button, saving you the time needed to scan the document every time you use it.

This function is for one-color printing only, and lets you print letterheads on a document. Just recall the data and it is automatically overlaid on the master along with the scanned document.



Stamp

With Stamp for two-color printing, you can store your most frequently-used stored items on a dedicated page of the touchscreen for immediate access and printing at a single touch.

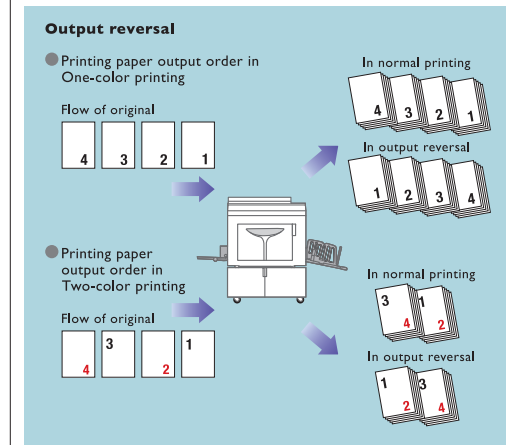
Note: Optional Document Storage Card DM-I28CF is required for Document storage, Overlay and Stamp functions.

Extra output control functions

RISO printers are all about quality and ease of use. So MZ series printers also offer you some extra output control functions to match your workflow or your original, making print jobs even more convenient.

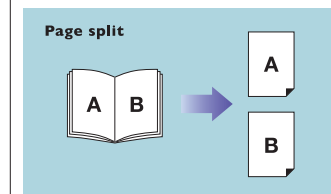
Output reversal

Normally, finished work is output in the order it is scanned or sent to the printer via your network – all copies of page one are printed first, followed by page two, etc. Sometimes, though, you may want the pages in reverse order, for example if you have an auto collator that will only accept pages that way. Output reversal is the answer, printing the last page sent to the printer first and the first page last.



Page split

Often, when you scan a two-page spread in a book or magazine you'd like the individual pages printed on separate sheets. Page split makes it easy and automatic: you just set and scan your two-page original, tell the printer you want to split the pages and the machine does the rest automatically, giving you the left-hand page on one sheet and the right-hand page on another.



Powerful security and user-management functions

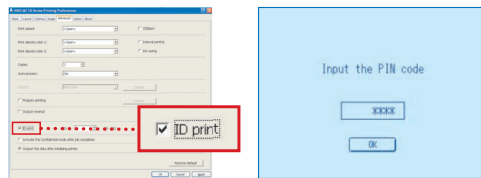
Keep confidential documents safe, monitor printer usage

MZ series printers offer a range of functions to maintain privacy and prevent unauthorized or excessive use. Now you can be sure that confidential documents stay that way, and that nobody is using the printer for unauthorized purposes.

Smart functions keep you in control

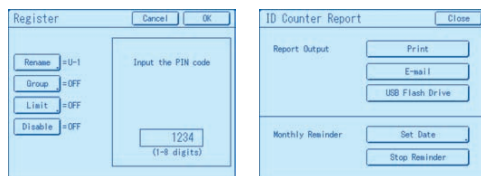
ID print

If you're printing a confidential document, you want to make sure no unauthorized person sees it, even while it's printing. ID print lets you do this by holding your document in the printer's memory until you come to the machine and input your PIN. Then printing starts and you can stand by the printer to keep prying eyes away from your confidential material.



User management

The user management function lets you monitor the number of prints/masters and set up usage limits for individual users or groups. Users input their PIN number whenever they print, so you always know how much any person/group has used the printer. You can receive ID counter reports by printing them out, saving the CSV file to a USB flash drive, or if your printer is connected to your network, you can receive ID counter reports via e-mail.



Key card counter IV:N

Another way to control printer usage is via the optional key card counter. Users are issued with a personal card which they swipe through the unit to start operation. Details of master/print usage are recorded for later auditing.



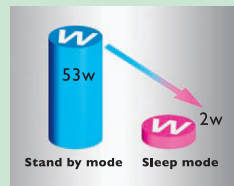
Environment-friendly design

The MZ series is engineered to be easy on the environment. ENERGY STAR compatibility assures energy efficiency. Compliance with the EU's Restriction of Hazardous Substances (RoHS) Directive restricts the use of hazardous materials, while meeting the standards of the EU Waste Electrical and Electronic Equipment (WEEE) Directive assures that your printer is recycled at the end of its useful life.



Energy saving modes

The MZ series offers a variety of energy saving modes including a sleep mode, auto power off after a user-specified time with no activity, and auto power off at a set time – for example 6:00pm.



*without option.

Choose from this wide range of options to enhance your MZ printers



Color drum
A wide variety of colors is available. Drums can be stored in their own case.



Job separator IV:N III
Allows the machine to print and sort into groups separated by tape.



Auto document feeder AF-VI:II
Automatic feed of up to 50 sheets of originals.



RISO stand D type (II)
Provides storage for up to two optional print drums, inks and masters.



Auto document feeder DX-I
Automatic scanning of both sides of originals and automatic feeding. 50 sheets capacity.



RISO stand N type (II)
Sturdy open-front stand also offers convenient storage of consumables.



Card feed kit
Allows use of thicker stock such as cards and envelopes.



IS300
Provides compatibility with Adobe PostScript 3.

RISO Network card
Gives the printer network connection. Comes bundled with RISO-MONITOR remote printer-monitoring software.

Document storage card DM-I28CF
Allows storage of frequently used documents for instant recall.

Cover kit-paper feed/ejection

Envelope feed kit

Wide stacking tray

The RISO assurance of quality

RISO Ink

A huge selection of colors lets you add powerful impact to your documents. And because the ink is made by RISO, you're assured of the highest quality results.



Ink
RISO INK Z TYPE HD BLACK
RISO INK Z TYPE COLOR
RISO INK Z TYPE CUSTOM COLOR



RISO Master

High quality RISO masters provide the best performance match with MZ printers, giving a sharp clear image to all your documents.



Master
RISO MASTER Z TYPE HD 87



RISO i Quality System™

The RISO i Quality System offers a large number of quality and convenience benefits. Among them are:

- Automatic assurance of optimum print quality.
- Prevention of operator error.
- Warning of shortages in remaining ink/master volume.
- Minimized paper waste.

The RISO i Quality System gives easy monitoring of the status of consumables. Simply press the "i Info" button on the Basic Screen for a graphic display of remaining consumables.

